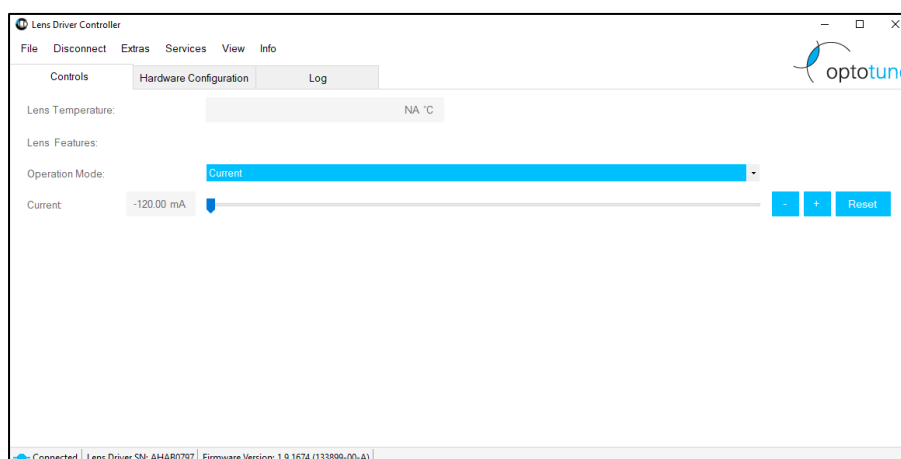
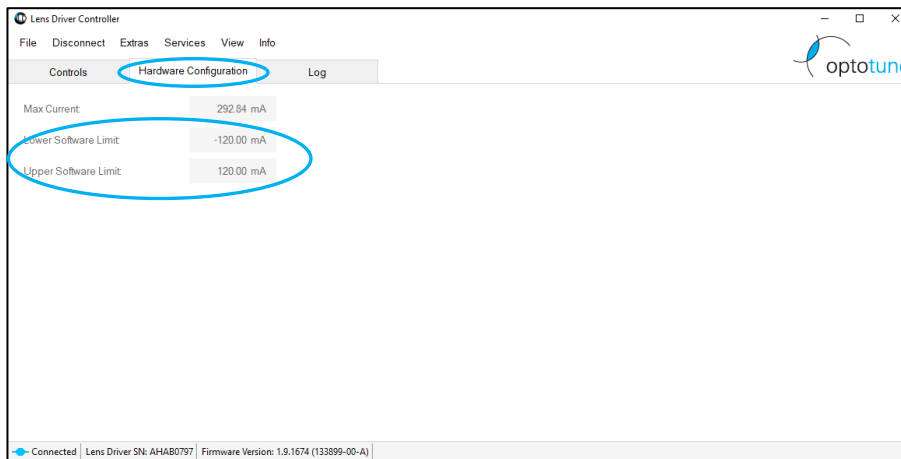
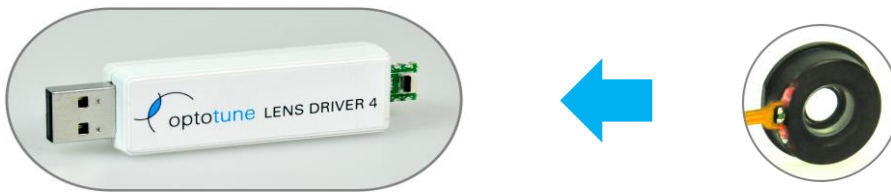


## EL-3-10 Operating instructions

The compact EL-3-10 lens can be driven with Optotune's EL-E-4 lens driver by simply connecting the flex cable of the lens to the Molex connector on the lens driver. In Optotune's software interface, the current to the lens can be adjusted to drive the lens. It's important to note that  $\pm 120$  mA are required to tune across the whole optical power range. As the lens driver can output more current, it has to be connected to the PC without the lens connected first. Then, in the "Hardware Configurations" tab, the software limit has to be set to  $\pm 120$  mA. Afterwards the lens driver can be disconnected, the lens connected to the lens driver and the lens driver connected back to the PC. The current will now only be adjustable from  $\pm 120$  mA, hence an overdriving of the lens can be prevented.



### Instructions

1. Connect lens driver to the PC without a lens connected
2. Open the lens driver controller software
3. Go to the hardware configurations tab
4. Set the lower software limit to -120mA
5. Set the upper software limit to 120mA
6. Close the software window
7. Disconnect the lens driver
8. Connect the lens to the lens driver
9. Connect the lens driver to the PC
10. Open the lens driver controller software
11. Use the slider to adjust the current to the lens

### Safety and compliance

The product fulfills the RoHS and REACH compliance standards. The customer is solely responsible to comply with all relevant safety regulations for integration and operation.

For more information on optical, mechanical and electrical parameters, please contact [sales@optotune.com](mailto:sales@optotune.com).